



Government of India
Ministry of Earth Sciences
India Meteorological Department



Press Release

Date: 22nd August, 2025

Time of Issue: 1345 hours IST

Subject: i) Increase in rainfall activity over Northwest India with isolated heavy falls till 26th August, 2025.
ii) Heavy to very heavy rainfall is very likely over Gujarat and southeast Rajasthan till 28th August with Isolated extremely heavy rainfall also likely over East Rajasthan on 22nd & 23rd August, 2025.
iii) Under the influence of cyclonic circulation over West Bengal & neighbourhood, heavy to very heavy rainfall with isolated Extremely heavy falls very likely over Jharkhand and Odisha on 22nd August.

Realised weather during past 24 hours till 0830 hours IST of today, the 22nd August, 2025:

- ❖ Heavy to very heavy rainfall with extremely heavy falls (≥ 21 cm) has been recorded at isolated places over East Rajasthan.
- ❖ Very heavy rainfall (12-20 cm) has been recorded at isolated places over West Rajasthan, West Madhya Pradesh, West Bengal, Bihar, Jharkhand, Tamil Nadu, Meghalaya.
- ❖ Heavy rainfall (7-11 cm) has been recorded at isolated places over Odisha, Chhattisgarh, Madhya Maharashtra, Nagaland, Assam, Gujarat Region and East Uttar Pradesh.

For more details of realised weather, kindly refer [Annexure I](#).

i. Weather Systems, Forecast and Warnings (refer to Annexure II & III):

- ❖ The Monsoon trough runs near its normal position.
- ❖ An **upper air cyclonic circulation** lay over Gangetic west Bengal & adjoining Bangladesh and extends upto middle tropospheric levels tilting southwestward with height.
- ❖ Another **upper air cyclonic circulation** lay over southwest Uttar Pradesh & neighbourhood and extends upto middle tropospheric levels tilting southwestward with height.
- ❖ A fresh low-pressure area is likely to form over northwest Bay of Bengal off Odisha-West Bengal coasts around 25th August 2025.

Under the influence of these systems, the following weather is likely:

East & Central India:

- ❖ **Extremely heavy rainfall** very likely over Jharkhand and Odisha on 22nd August.
- ❖ Isolated **heavy rainfall** likely over Madhya Pradesh, Chhattisgarh during next 6-7 days; Odisha, Jharkhand, Bihar, West Bengal during 22nd-26th; Vidarbha on 27th & 28th August with isolated **very heavy rainfall over West Madhya Pradesh, Bihar on 22nd & 23rd; Gangetic West Bengal on 22nd, Jharkhand on 23rd and Chhattisgarh on 23rd August.**
- ❖ Light to moderate rainfall at most/many places accompanied with thunderstorm & lightning likely over the region during next 5 days.

Northwest India:

- ❖ **Extremely heavy rainfall** very likely over East Rajasthan on 22nd & 23rd August.
- ❖ Isolated **heavy rainfall** likely over Himachal Pradesh, Uttarakhand, Rajasthan during next 7 days; Haryana during 22nd-27th; Uttar Pradesh during 22nd-25th; Punjab during 23rd-26th; Jammu & Kashmir on 23rd & 24th August with **isolated very heavy rainfall over East Rajasthan during 24th-26th; Haryana on 23rd; Uttarakhand during 22nd-24th; West Rajasthan during 22nd-25th August.**

- ❖ Light/moderate rainfall at most/many places accompanied with thunderstorm & lightning likely over Jammu-Kashmir-Ladakh-Gilgit-Baltistan-Muzaffarabad, Uttarakhand & Rajasthan during next 7 days.

West India:

- ❖ **Heavy to very heavy rainfall is very likely to continue over north Gujarat till 23rd August. A fresh spell of Heavy to Very Heavy Rainfall over Gujarat state from 25th August onwards.**
- ❖ **Heavy rainfall** is very likely to continue over Konkan on 25th; Madhya Maharashtra on 26th and **very heavy rainfall over Konkan & Goa during 26th-28th and ghat areas of Madhya Maharashtra on 27th & 28th August.**
- ❖ Strong surface winds (speed reaching 40-50 kmph) very likely over Gujarat coast during next 5 days and over Maharashtra coast 25th & 26th August.
- ❖ Light to moderate rainfall at most/many places very likely over the region during next 7 days.

Northeast India:

- ❖ Isolated **heavy rainfall** likely to continue over Assam & Meghalaya, Nagaland, Manipur, Mizoram & Tripura during 22nd-27th and Arunachal Pradesh during 22nd-25th August.
- ❖ Light/moderate rainfall at many places accompanied with thunderstorm & lightning likely during next 2 days.

South Peninsular India:

- ❖ Isolated **heavy rainfall** likely over Coastal Karnataka, Kerala during 26th-28th; Coastal Andhra Pradesh on 22nd, 26th & 27th August.
- ❖ Light to moderate rainfall at most/many places accompanied with thunderstorm & lightning likely over Tamil Nadu, Telangana on 22nd & 23rd; Coastal Andhra Pradesh & Yanam and interior Karnataka during next 5 days.

Fishermen warning:

Fishermen are advised not to venture into the following from 22nd August to 27th August 2025 to the following Areas:

Arabian Sea:

Along and off the Somalia, Oman coasts and adjoining sea areas; over some parts of central Arabian Sea, southwest, northeast Arabian Sea; over few parts of northwest Arabian Sea during 23rd to 27th August; along and off south Gujarat coasts during 22nd to 27th August; off Maharashtra coasts during 24th to 26th and Maharashtra, Goa, Karnataka and north Kerala coasts on 26th August.

Bay of Bengal:

Along and off Odisha, West Bengal and north BoB during 22nd to 24th August; some parts of westcentral Bay of Bengal on 26th August.

ii. Weather conditions and forecast over Delhi/NCR during 22nd to 25th August, 2025 (Annexure IV)

For more details, kindly refer National Weather Bulletin:

https://mausam.imd.gov.in/responsive/all_india_forecast_bulletin.php

For District wise warnings refer: <https://mausam.imd.gov.in/responsive/districtWiseWarningGIS.php>

For Fishermen warning refer <https://rsmcnewdelhi.imd.gov.in/fishermen-warning.php>

Rainfall recorded (in cm) during past 24 hours till 0830 hours IST of today, the 22nd August:

East Rajasthan: Sawaimadhopur Tesil SR (dist Sawai Madhopur) 25; Patan (dist Bundi) 21; Bijoliya SR (dist Bhilwara) 17; Chothkabarwara SR (dist Sawai Madhopur), Degod SR (dist Kota) 15 Each; Ladpura SR (dist Kota) 14; Kota-aero (dist Kota), Malerainadunger SR (dist Sawai Madhopur) 13 Each; Bhungra SR (dist Banswara) 12; Kishanganj (dist Baran) 11; Mangrol (dist Baran), Anta SR (dist Baran) 10 Each; Banswara SR (dist Banswara), Jahazpur (dist Bhilwara), Talera SR (dist Bundi), Khandar SR (dist Sawai Madhopur), Pipalda SR (dist Kota) 9 Each; Baran (dist Baran), Badesar SR (dist Chittorgarh), Nimbahera (dist Chittorgarh), Arnod SR (dist Pratapgarh) 8 Each; Dhambola (dist Dungarpur), Udaipur/D-aero (dist Udaipur) 7 Each;

Assam & Meghalaya: Mawsynram (dist East Khasi Hills) 19; Cherrapunji (dist East Khasi Hills) 11; Cherrapunji(rkm) (dist East Khasi Hills), Khanapara (dist Kamrup Metropolitan) 10 Each; Shella (dist East Khasi Hills), Mawkyrwat (dist South West Khasi Hills) 9 Each; Rangia (dist Kamrup (rural)), Nongstein (dist West Khasi Hills) 7 Each;

Gangetic West Bengal: Panagarh (IAF) (dist Paschim Bardhaman) 19; Labpur (dist Birbhum) 13; Manteswar (dist Purba Bardhaman) 12; Burdwan PTO (dist Purba Bardhaman) 11; Bankura(CWC) (dist Bankura), Kandi (dist Murshidabad), Berhampore (dist Murshidabad), Sagar Island PTO (dist South 24 Parganas) 10 Each; Canning (dist South 24 Parganas) 8; Rampurhat (DRMS) (dist Birbhum), Bankura (dist Bankura), Mankar (dist Purba Bardhaman), Burnpur (dist Paschim Bardhaman), Asansol (dist Paschim Bardhaman) 7 Each;

Jharkhand: Goilkeria (dist West Singhbhum) 16; Kuru (dist Lohardaga) 13; Nandadih (dist Giridih), Bau Kanke (dist Ranchi), Ghagra (dist Gumla) 9 Each; Barkisuriya (dist Giridih) 8;

West Madhya Pradesh: Badoda (dist Sheopur) 15; Jaora (dist Ratlam), Karhal (dist Sheopur) 10 Each; Manasa (dist Neemuch) 9; Sheopur-aws (dist Sheopur) 8; Jawad (dist Neemuch) 7;

Odisha: Tensa (dist Sundargarh) 14; Deogaon (dist Jharsuguda) 13; Jharsuguda (dist Jharsuguda) 11; Laikera (dist Jharsuguda), Kirmira (dist Jharsuguda) 10 Each; Gurundia (dist Sundargarh), Lephripa (dist Sundargarh) 8 Each; Burla (dist Sambalpur), Swam-patna (dist Keonjhar), Kalinga (dist Kandhamal) 7 Each;

Bihar: Tribeni/Balmikinagar (dist West Champaran), Piro (dist Bhojpur) 14 Each; Charpokhiri (dist Bhojpur), Rohtas (dist Rohtas) 8 Each; Garhani (dist Bhojpur), Belaganj (dist Gaya) 7 Each;

Sub Himalayan West Bengal & Sikkim: Damdim Tea Estate (dist Jalpaiguri) 13; Kumargram (dist Alipurduar) 10; Raidak Tea Estate (dist Alipurduar), Sankos Tea Estate (dist Alipurduar) 9 Each; Maynaguri College (dist Jalpaiguri), Newlands Tea Garden (dist Alipurduar), Toorsa Tea Garden (dist Alipurduar) 8 Each;

West Rajasthan: Desuri (dist Pali), Erinpura/Jawai Dam (dist Pali) 10 Each; Jalore (dist Jalore) 9; Sojat (dist Pali) 8; Ahore SR (dist Jalore) 7;

Chhattisgarh: Tamnar (dist Raigarh) 9;

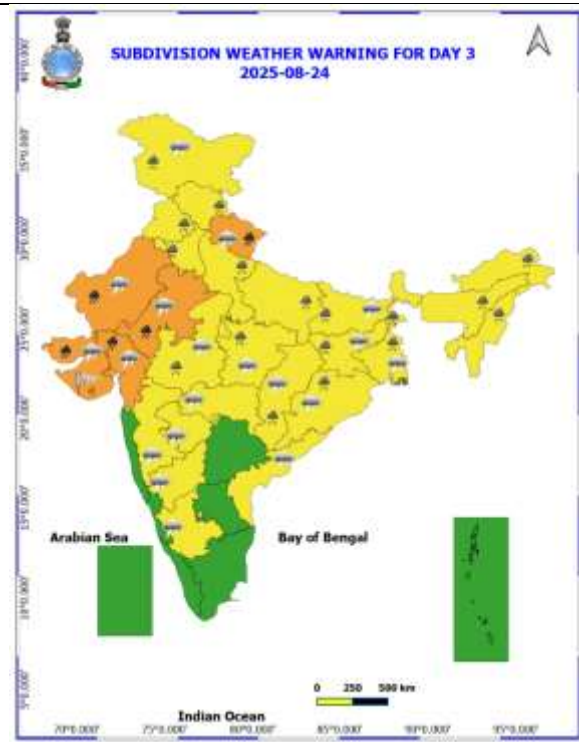
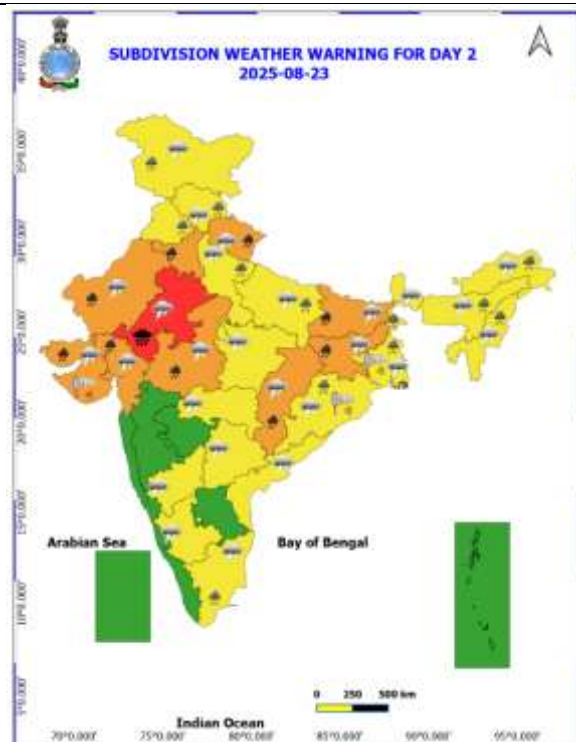
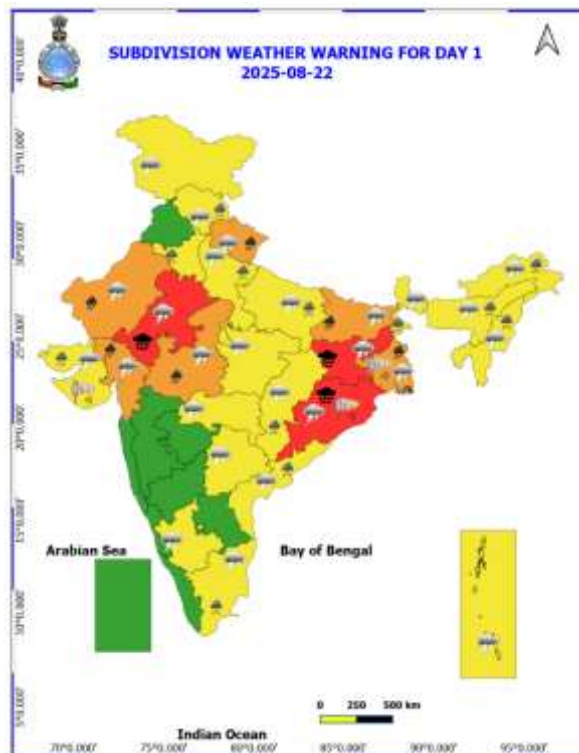
Gujarat Region: Pardi (dist Valsad) 9; Dharampur (dist Valsad) 7;

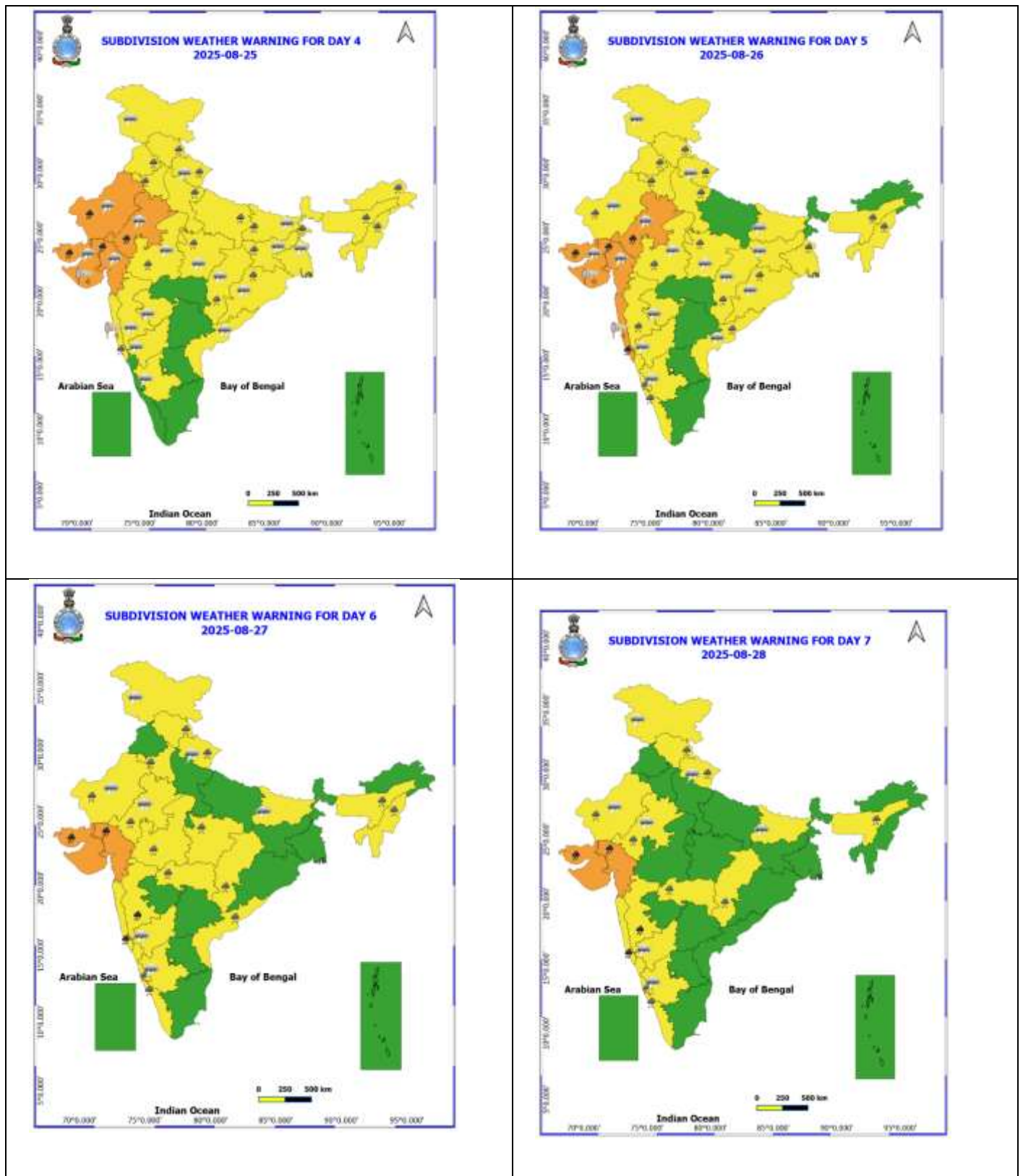
East Uttar Pradesh: Jaunpur CWC (dist Jaunpur) 8; Trimohani Ghat Fmo (dist Maharajganj), Nighasan (dist Kheri), Maharajganj (dist Maharajganj) 7 Each;

Nagaland: Tseminyu Nsdma AWS (dist Kohima) 7.

Table-1								
7 Days Rainfall Forecast								
S.No.	Subdivision	22- Aug	23- Aug	24- Aug	25- Aug	26- Aug	27- Aug	28- Aug
		Day 1	Day 2	Day 3	Day 4	Day 5	Day 6	Day 7
1	ANDAMAN & NICOBAR ISLANDS	FWS	FWS	FWS	WS	FWS	SCT	SCT
2	ARUNACHAL PRADESH	FWS	FWS	FWS	FWS	SCT	SCT	SCT
3	ASSAM & MEHGHALAYA	FWS	FWS	FWS	FWS	SCT	SCT	SCT
4	NAGALAND, MANIPUR, MIZORAM AND TRIPURA	FWS	FWS	FWS	FWS	FWS	FWS	FWS
5	SUB HIMALAYAN WEST BENGAL & SIKKIM	WS	WS	WS	WS	FWS	FWS	FWS
6	GANGETIC WEST BENGAL	WS	WS	WS	FWS	FWS	FWS	FWS
7	ODISHA	WS	FWS	FWS	FWS	FWS	FWS	FWS
8	JHARKHAND	WS	WS	WS	WS	FWS	FWS	FWS
9	BIHAR	FWS	FWS	FWS	FWS	SCT	SCT	SCT
10	EAST UTTAR PRADESH	FWS	WS	WS	WS	FWS	FWS	SCT
11	WEST UTTAR PRADESH	FWS	FWS	WS	WS	WS	FWS	SCT
12	UTTARAKHAND	WS	WS	WS	WS	WS	FWS	FWS
13	HARYANA, CHANDIGARH & DELHI	FWS	WS	WS	WS	WS	WS	SCT
14	PUNJAB	FWS	WS	WS	FWS	WS	WS	SCT
15	HIMACHAL PRADESH	FWS	WS	WS	WS	WS	WS	FWS
16	JAMMU AND KASHMIR AND LADAKH	SCT	WS	WS	SCT	FWS	SCT	SCT
17	WEST RAJASTHAN	FWS	FWS	FWS	FWS	FWS	SCT	SCT
18	EAST RAJASTHAN	WS	WS	WS	WS	WS	FWS	FWS
19	WEST MADHYA PRADESH	FWS	FWS	FWS	FWS	WS	WS	WS
20	EAST MADHYA PRADESH	FWS	FWS	WS	WS	WS	WS	WS
21	GUJRAT REGION	WS	WS	WS	WS	WS	WS	WS
22	SAURASHTRA & KUTCH	WS	WS	WS	WS	WS	WS	WS
23	KONKAN & GOA	WS	WS	WS	WS	WS	WS	WS
24	MADHYA MAHARASHTRA	SCT	ISOL	ISOL	ISOL	SCT	SCT	SCT
25	MARATHWADA	ISOL	ISOL	ISOL	ISOL	SCT	SCT	SCT
26	VIDARBHA	FWS	FWS	FWS	WS	WS	WS	WS
27	CHHATTISGARH	WS	WS	WS	WS	WS	WS	WS
28	COASTAL ANDHRA PRADESH	ISOL	ISOL	ISOL	ISOL	SCT	FWS	SCT
29	TELANGANA	ISOL	ISOL	ISOL	ISOL	SCT	FWS	FWS
30	RAYALASEEMA	ISOL	ISOL	ISOL	ISOL	ISOL	ISOL	ISOL
31	TAMILNADU & PUDUCHERRY	SCT	SCT	ISOL	ISOL	ISOL	ISOL	ISOL
32	COSTAL KARNATAKA	WS	WS	WS	WS	WS	WS	WS
33	NORTH INTERIOR KARNATAKA	ISOL	SCT	ISOL	SCT	SCT	FWS	FWS
34	SOUTH INTERIOR KARNATAKA	SCT	SCT	ISOL	ISOL	SCT	FWS	FWS
35	KERALA AND MAHE	SCT	SCT	ISOL	SCT	FWS	WS	WS
36	LAKSHADWEEP	SCT	SCT	SCT	SCT	FWS	FWS	WS

- As the lead period increases forecast accuracy decrease.





- Action may be taken based on ORANGE AND REDCOLOUR warnings.
- Vulnerable regions likely urban and hilly areas action may be initiated for heavy rainfall warning.
- As the lead period increases forecast accuracy decreases.

Detailed districtwise Multi Hazard weather warning for next five days available at <https://mausam.imd.gov.in/responsive/districtWiseWarningGIS.php>

Weather forecast over Delhi/NCR during 22th August to 25th August 2025**Past Weather:**

Minimum temperatures and Maximum temperatures showed no significant change during the past 24 hours over Delhi. Minimum temperatures ranged between 25–27 °C and maximum temperatures between 34–35 °C. Minimum temperatures and maximum temperatures were near normal. North easterly winds prevailed with wind speed upto 17 kmph. Generally cloudy sky conditions and easterly winds upto 5-10 kmph prevailed over the region in the forenoon today.

Weather Forecast:

22.08.2025: Generally cloudy sky. One or two spells of very light to light rain/thundershowers at a few places towards afternoon/evening. The maximum temperatures over Delhi are likely to be in the range of 33 to 35°C. The maximum temperature will be near normal. The predominant surface wind will likely be from the east direction with a wind speed of upto 10-15 kmph during afternoon, evening and night.

23.08.2025: Generally cloudy sky. Possibility of light to moderate rain/ thundershowers at most places with possibility of intense spell at isolated places. The maximum and minimum temperatures over Delhi are likely to be in the range of 30 to 32°C and 22 to 24 °C respectively. The minimum temperature will be below normal up to 2 to 4°C and the maximum temperature will be below normal upto 2 to 4°C. The predominant surface wind will likely to be from the east direction with a wind speed of upto 05-10 kmph during morning and 10-15 kmph from the east direction during afternoon, evening and night.

24.08.2025: Generally cloudy sky. Possibility of light to moderate rain/ thundershowers at most places with possibility of intense spell at isolated places. The maximum and minimum temperatures over Delhi are likely to be in the range of 30 to 32°C and 21 to 23°C respectively. The minimum temperature will be below normal up to 3 to 5°C and the maximum temperature will be below normal up to 2 to 4°C. The predominant surface wind will likely to be from the east direction with a wind speed of upto 10-15 kmph during morning and afternoon and 05-10 kmph from the east direction during evening and night.

25.08.2025: Generally cloudy sky. Light to moderate rain/thundershowers. The maximum and minimum temperatures over Delhi are likely to be in the range of 30 to 32°C and 21 to 23°C respectively. The minimum temperature will be below normal up to 3 to 5°C and the maximum temperature will be below normal up to 2 to 4°C. The predominant surface wind will likely to be from the east direction with a wind speed of 10-15 kmph during morning. It will gradually increase upto 15-20 kmph from the east direction during afternoon, evening and night.

Impact & Action Suggested due to

- ❖ **Extremely heavy rainfall** very likely over Jharkhand and Odisha on 22nd August East Rajasthan on 22nd & 23rd August
- ❖ **Isolated very heavy rainfall over** Gujarat state during 22nd-28th; West Madhya Pradesh, Bihar on 22nd & 23rd; Gangetic West Bengal on 22nd, Jharkhand, Chhattisgarh, Haryana on 23rd; East Rajasthan during 24th-26th; Uttarakhand during 22nd-24th; West Rajasthan during 22nd-25th; Konkan & Goa during 26th-28th and ghat areas of Madhya Maharashtra on 27th & 28th August.

Impact Expected

- Localized Flooding of roads, water logging in low lying areas and closure of underpasses mainly in urban areas of the above region.
- Occasional reduction in visibility due to heavy rainfall.
- Disruption of traffic in major cities due to water logging in roads leading to increased travel time.
- Minor damage to kutcha roads.
- Possibilities of damage to vulnerable structure.
- Localized Landslides/Mudslides/landslips/mudslips/landsinks/mudsinks.
- Damage to horticulture and standing crops in some areas due to inundation.
- It may lead to riverine flooding in some river catchments (for riverine flooding please visit Web page of CWC)

Action Suggested

- Check for traffic congestion on your route before leaving for your destination.
- Follow any traffic advisories that are issued in this regard.
- Avoid going to areas that face the water logging problems often.
- Avoid staying in vulnerable structure.

Agromet advisories for likely impact of Heavy / Heavy to Very Heavy Rainfall

- In **Sub-Himalayan West Bengal**, make provision to drain out excess water from *aman* rice and vegetable fields (chilli, bitter gourd, pointed gourd, okra, brinjal etc.) and cover the chilli seedlings with plastic to protect them from heavy rains in **Terai Zone**. In **Gangetic West Bengal**, ensure proper drainage in fields of rice and groundnut in **Laterite and Red Soil Zone**; rice and vegetables in **New Alluvial Zone** and vegetable beds, standing vegetable crops and betel gardens in **Coastal Saline Zone**.
- In **Odisha**, make provision for draining out excess rain water from fields of green gram, black gram, sugarcane, vegetables and fruit orchards in **East and South Eastern Coastal Plain Zone**; rice, maize, black gram and vegetables in **North Central Plateau Zone**; rice, vegetables and fruit orchards in **North Eastern Coastal Plain Zone**; rice, maize and vegetables in **West Central Table Land Zone** and rice, groundnut and vegetables in **North Eastern Plateau Zone**.
- In **Bihar**, ensure proper drainage from standing crops such as pigeon pea, turmeric, yam, sunflower and maize as well as from vegetable nurseries in **South Bihar Alluvial Zone**.
- In **Jharkhand**, ensure adequate drainage facilities in fields of rice, maize, black gram, green gram, tuber crops and vegetables in **Western Plateau Zone**.
- In **Madhya Pradesh**, provide adequate drainage in fields of soybean, maize and vegetables in **Malwa Plateau Zone**; soybean, black gram, maize, cotton and vegetables in **Jhabua Hills Zone**; rice, soybean, maize and vegetables in **Kymore Plateau and Satpura Hill Zone** and rice, maize, soybean, green gram, pigeon pea and vegetables in **Gird Zone**.
- In **Gujarat**, provide mechanical support to horticultural crops and staking or support to vegetables and young fruit plants to avoid lodging due to heavy rains and strong winds. Make arrangements to drain out excess water from fields of rice, sugarcane, vegetables and tuber crops in **South Gujarat Heavy Rainfall Zone**; rice, cotton, sugarcane and pigeon pea in **South Gujarat Zone**; groundnut, cotton, soybean, black gram, green gram, sesame and pigeon pea in **South Saurashtra Zone**; groundnut, cotton, sesame, black gram and green gram in **North Saurashtra Zone**; rice, cotton, green gram, black gram, pigeon pea, pearl millet and vegetables in **Bhal and Coastal Zone**; rice, pearl millet, pigeon pea and cotton in **Middle Gujarat Zone** and castor, cotton, groundnut, pearl millet and sesame in **North Gujarat Zone** and **North West Zone**.
- In **East Rajasthan**, make arrangements to drain out excess water from fields of pearl millet, sesame, black gram and vegetables in **Flood Prone Eastern Plain Zone**; groundnut, green gram, moth bean, cowpea and pearl millet in **Semi-Arid Eastern Plain Zone**; rice, maize, soybean, black gram and groundnut in **Southeastern Humid Plain Zone**; maize, green gram and soybean in **Sub Humid**

- Southern Plain and Aravali Hill Zone** and soybean, maize, cotton and rice in **Southern Humid Plain Zone**. In **West Rajasthan**, make provision to drain out excess water from fields of sesame, moth bean, pearl millet, green gram and cluster bean in **Arid Western Plain Zone**.
- In **Himachal Pradesh**, maintain proper drainage channels in ginger, turmeric and maize fields in **Mid Hills Sub Humid Zone** and rice, maize and vegetable fields in **Sub Montane and Low Hills Sub Tropical Zone**. In **High Hills Sub Temperate Wet Zone**, harvest ripened tomatoes and ensure proper drainage in maize, kidney bean, vegetable fields and fruit orchards.
 - In **Uttarakhand**, maintain proper drainage channels in fields of soybean, maize, pulses, finger millet, ginger, vegetable and fruit orchards in **Hill Zone**; barnyard millet, finger millet and green gram in **Sub Humid Sub Tropic Zone** and rice, green gram, black gram, sugarcane, maize, soybean, groundnut and vegetables in **Bhabar and Tarai Zone**.
 - In **Punjab**, maintain proper drainage in chilli fields and remove stagnant rainwater immediately after rainfall in **Undulating Plain Zone**. Ensure proper drainage in fields of sugarcane, maize, soybean and green gram in **Sub-Montane Undulating Zone** and sugarcane, maize and cotton in **Central Plain Zone**.
 - In **Haryana**, make arrangements to drain out excess water from fields of sugarcane, cotton, maize, pearl millet and vegetables in **Eastern Zone**.
 - In **Meghalaya**, maintain proper drainage in ginger and vegetable fields and fruit orchards. Provide support to banana plants to prevent lodging. Maintain a thin 2-3 cm layer of stagnant water in rice fields after transplanting.
 - In **Arunachal Pradesh**, ensure proper drainage in rice fields and maintain 5-7 cm water level. Maintain drainage channels in finger millet, banana and vegetable fields. Strengthen the bunds in millet fields to prevent erosion and seedling washout.

Livestock / Fishery

- Keep the animals inside the shed during heavy rainfall and provide them balanced feed.
- Store feed and fodder in a safe place to prevent spoilage.
- Construct an outlet with proper netting around the ponds to drain out excess water, thereby preventing fish from escaping in case of overflow.

Agromet advisories for likely impact of Thunderstorm / Gusty Winds / Squally Winds

(Based on the IBF and advisories issued by different AMFUs)

- Provide mechanical support to horticultural crops and staking or support to vegetables and young fruit plants / fruit-bearing plants to avoid lodging due to strong winds.

Flash flood guidance:

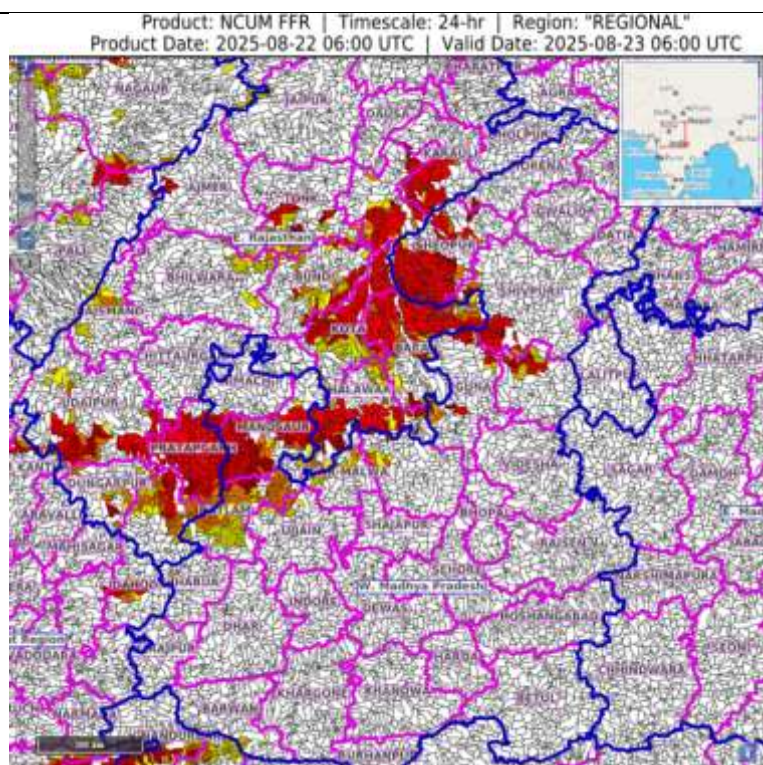
24 hours Outlook for the Flash Flood Risk (FFR) till 1130 IST of 23-08-2025 :

Moderate to High flash flood risk likely over few watersheds & neighbourhoods of following Met Sub-divisions during next 24 hours.

East Rajasthan – Baran, Bundi, Banswara, Jhalawar , Pratapgarh, Udaipur, Dungarpur, Swaimadhopur, Tonk, and Kota districts.

West Madhya Pradesh – Sheopur, Shivpuri, Guna, Mandsaur, Ratlam, an Agar Malwa districts

Surface runoff/ Inundation may occur at some fully saturated soils & low-lying areas over Area of Concern (AoC) as shown in map due to expected rainfall occurrence in next 24 hours.

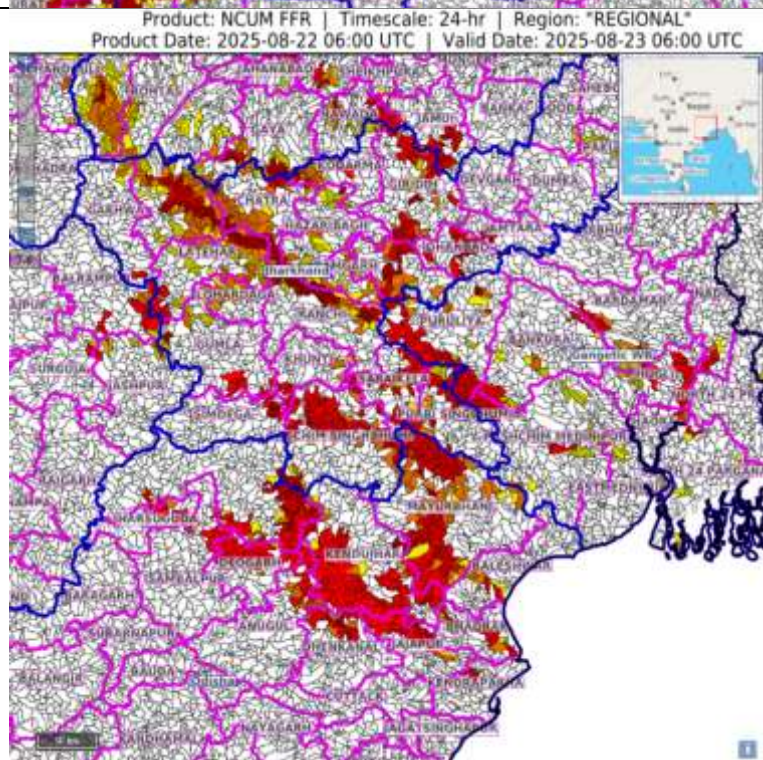


24 hours Outlook for the Flash Flood Risk (FFR) till 1130 IST of 23-08-2025 :

Low to Moderate flash flood risk likely over few watersheds & neighbourhoods of following Met Sub-divisions during next 24 hours.

Odisha – Angul, Mayurbhanj, Kendraparha, Kendujhar, Deogarh, Dhenkanal, and Sundargarh districts. Jharkhand - Bokaro, Chatra, Dhanbad, East Singhbhum, Gumla, Garwa, Hazaribagh, Khunti, Latehar, Lohardaga, Palamau, Ramgarh, Ranchi, Saraikela, Simdega, and West Singhbhum districts.

Surface runoff/ Inundation may occur at some fully saturated soils & low-lying areas over Area of Concern (AoC) as shown in map due to expected rainfall occurrence in next 24 hours.



Legends & abbreviations:

- ❖ **Heavy Rain:**64.5-115.5mm; **Very Heavy Rain:**115.6-204.4mm; **Extremely Heavy Rain:** >204.4mm.
- ❖ **Obsy:** Observatory; Automatic Weather Station; **ARG:** Automatic Rain Gauge; **dist:** District; **NH:** National Highway; **KVK:** Krishi Vigyan Kendra; **DVC:** Damodar Valley Corporation; **PTO:** Part Time Office, **Aero:** Aerodrome, **IAF:** Indian Air Force.
- ❖ **Region wise classification of meteorological Sub-Divisions:**
 - **Northwest India:** Western Himalayan Region (Jammu-Kashmir-Ladakh-Gilgit-Baltistan-Muzaffarabad, Himachal Pradesh and Uttarakhand); Punjab, Haryana-Chandigarh-Delhi; West Uttar Pradesh, East Uttar Pradesh, West Rajasthan and East Rajasthan.
 - **Central India:** West Madhya Pradesh, East Madhya Pradesh, Vidarbha and Chhattisgarh.
 - **East India:** Bihar, Jharkhand, Sub-Himalayan West Bengal & Sikkim; Gangetic West Bengal, Odisha and Andaman & Nicobar Islands.
 - **Northeast India:** Arunachal Pradesh, Assam & Meghalaya and Nagaland, Manipur, Mizoram & Tripura.
 - **West India:** Gujarat Region, Saurashtra & Kutch, Konkan & Goa, Madhya Maharashtra and Marathawada.
 - **South India:** Coastal Andhra Pradesh & Yanam, Telangana, Rayalaseema, Coastal Karnataka, North Interior Karnataka, South Interior Karnataka, Kerala & Mahe, Tamil Nadu, Puducherry & Karaikal and Lakshadweep.

LEGENDS

1. अंडमान और निकोबार द्वीपसमूह

2. अरुणाचल प्रदेश

3. असम और मेघालय

4. नागालैंड, मणिपुर, मिजोरम और त्रिपुरा

5. उप-हिमालयी पश्चिम बंगाल और सिक्किम

6. गंगीय पश्चिम बंगाल

7. ओडिशा

8. झारखंड

9. बिहार

10. पूर्वी उत्तर प्रदेश

11. पश्चिम उत्तर प्रदेश

12. उत्तराखंड

13. हरियाणा, चंडीगढ़ और दिल्ली

14. पंजाब

15. हिमाचल प्रदेश

16. जम्मू और कश्मीर और लद्दाख

17. पश्चिम राजस्थान

18. पूर्वी राजस्थान

19. पश्चिम मध्य प्रदेश

20. पूर्वी मध्य प्रदेश

21. गुजरात

22. सौराष्ट्र

23. कोंकण और गोवा

24. मध्य महाराष्ट्र

25. मराठवाड़ा

26. विदर्भ

27. छत्तीसगढ़

28. तटीय आंध्र प्रदेश और यनम

29. तेलंगाना

30. रायलसीमा

31. तमिलनाडु, पुडुचेरी और कराईकल

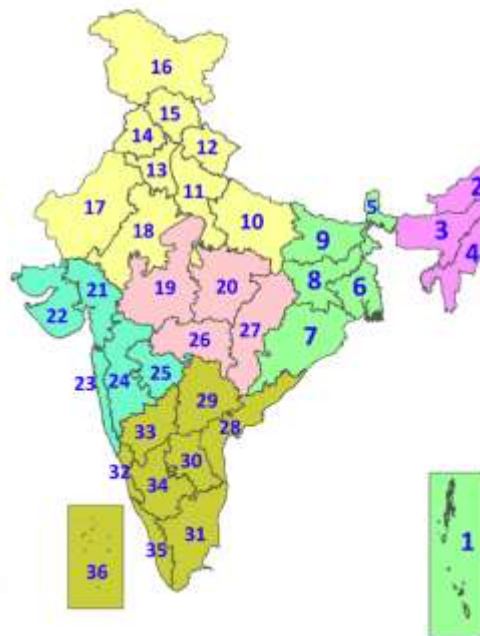
32. तटीय कर्नाटक

33. आंतरिक उत्तरी कर्नाटक

34. आंतरिक दक्षिणी कर्नाटक

35. केरल और माहे

36. लक्षद्वीप



1. Andaman & Nicobar Islands

2. Arunachal Pradesh

3. Assam & Meghalaya

4. Nagaland, Manipur, Mizoram & Tripura

5. Sub-Himalayan West Bengal & Sikkim

6. Gangetic West Bengal

7. Odisha

8. Jharkhand

9. Bihar

10. East Uttar Pradesh

11. West Uttar Pradesh

12. Uttarakhand

13. Haryana, Chandigarh & Delhi

14. Punjab

15. Himachal Pradesh

16. Jammu & Kashmir and Ladakh

17. West Rajasthan

18. East Rajasthan

19. West Madhya Pradesh

20. East Madhya Pradesh

21. Gujarat

22. Saurashtra

23. Konkan & Goa

24. Madhya Maharashtra

25. Marathwada

26. Vidarbha

27. Chhattisgarh

28. Coastal Andhra Pradesh & Yanam

29. Telangana

30. Rayalaseema

31. Tamilnadu, Puducherry & Karaikal

32. Coastal Karnataka

33. North Interior Karnataka

34. South Interior Karnataka

35. Kerala & Mahe

36. Lakshadweep

SPATIAL DISTRIBUTION (% of Stations reporting)

% Stations	Category	% Stations	Category
76-100	Widespread (WS/Most Places)	26-50	Scattered (SCT/A Few Places)
51-75	Fairly Widespread (FWS/Many Places)	1-25	Isolated (ISOL)



Fog



Heavy Snow



Cold Wave



Heavy Rain



Dust Storm



Cold Day



Very Heavy Rain



Heat Wave



Ground Frost



Extremely Heavy Rain



Warm Night



Thunder & Lightning



Hot Day



Hailstorm



Hot & Humid



Dust Raising Winds



Strong Surface Winds

COLOUR CODED WARNING

No Warning (No Action)

Watch (Be Aware)

Alert (Be Prepared To Take Action)

Warning (Take Action)

Probabilistic Forecast

Terms	Probability of Occurrence (%)
Unlikely	< 25
Likely	25 - 50
Very Likely	50 - 75
Most Likely	> 75

* Red colour warning does not mean "Red Alert", Red colour warning means "Take Action".

Forecast and Warning for any day is valid from 0830 hours IST of day till 0830 hours IST of next day.

For more details, kindly visit <https://mausam.imd.gov.in> or contact: 011-2434-4599

(Service to the Nation since 1875)

DEFINITION/CRITERIA

Rain/ Snow *

Heavy: 64.5 to 115.5 mm/cm *
Very Heavy: 115.6 to 204.4 mm/cm *
Extremely Heavy: > 204.4 mm/cm *

Heat Wave

When maximum temperature of a station reaches $\geq 40^{\circ}\text{C}$ for plains and $\geq 30^{\circ}\text{C}$ for hilly regions
(a) Based on Departure from normal

Heat Wave: Maximum Temperature Departure from normal 4.5°C to 6.4°C .

Severe Heat Wave: Maximum Temperature Departure from normal $\geq 6.5^{\circ}\text{C}$

(b). Based on Actual maximum temperature

Heat Wave: When actual maximum temperature $\geq 45^{\circ}\text{C}$.

Severe Heat Wave: When actual maximum temperature $\geq 47^{\circ}\text{C}$.

(c). Criteria for heat wave for coastal stations

When maximum temperature departure is $> 4.5^{\circ}\text{C}$ from normal. Heat Wave may be described provided maximum temperature $\geq 37^{\circ}\text{C}$.

Warm Night

When maximum temperature remains 40°C

Warm Night: When minimum temperature departure 4.5°C to 6.4°C .

Severe Warm Night: When minimum temperature departure $> 6.4^{\circ}\text{C}$.

Cold Wave

When minimum temperature of a station $\leq 10^{\circ}\text{C}$ for plains and $\leq 0^{\circ}\text{C}$ for hilly regions.

(a). Based on departure

Cold Wave: Minimum Temperature Departure from normal -4.5°C to -6.4°C .

Severe Cold Wave: Minimum Temperature Departure from normal $\leq -6.5^{\circ}\text{C}$

(b) Based on actual Minimum Temperature (for Plains only)

Cold Wave: When Minimum Temperature is $\leq 4.0^{\circ}\text{C}$

Severe Cold Wave: When Minimum Temperature is $\leq 2.0^{\circ}\text{C}$

(c) For Coastal Stations

When Minimum Temperature departure is $\leq -4.5^{\circ}\text{C}$ & actual Minimum Temperature is $\leq 15^{\circ}\text{C}$

Cold Day

When minimum temperature of a station $\leq 10^{\circ}\text{C}$ for plains and $\leq 0^{\circ}\text{C}$ for hilly regions
Based on departure

Cold Day: Maximum Temperature Departure from normal -4.5°C to -6.4°C .

Severe Cold Day: Maximum Temperature Departure from normal $\leq -6.5^{\circ}\text{C}$

Fog

Phenomenon of small droplets suspended in air and the horizontal visibility $< 1\text{km}$

Moderate Fog: When the visibility between 500-200 metres

Dense Fog: when the visibility between 50- 200 metres

Very Dense Fog: when the visibility < 50 metres

Thunderstorm

Sudden electrical discharges manifested by a flash of light (Lightning) and a sharp rumbling sound (thunder)

Dust/Sand Storm

An ensemble of particles of dust or sand energetically lifted to great heights by a strong and turbulent wind.

Frost

Ice deposits on ground

Air temperature $\leq 4^{\circ}\text{C}$ (over Plains)

Squall

A strong wind that rises suddenly, lasts for atleast 1 minute.

Moderate: Wind speed 52-61 kmph

Severe: Wind speed 62-67 kmph

Very Severe: Wind speed > 67 kmph

Sea State

Effect of various waves in the sea over specific area

Rough to very rough: Wind speed 41-62 kmph (22-33 knots) & Wave height 2.5-6 metre

High to very high: Wind speed 63-117 kmph (34-63 knots) & Wave height 6-14 metre

Phenomenal: Wind speed > 117 kmph (> 63 knots) & Wave height > 14 metre

Cyclone

Cyclonic Storm: Wind speed 62-87 kmph (34-47 knots)

Severe Cyclonic Storm: Wind speed 88-117 kmph (48-63 knots)

Very Severe Cyclonic Storm: Wind speed 118-165 kmph (64 - 89 knots)

Extremely Severe Cyclonic Storm: Wind speed 166-220 kmph (90 -119 knots)

Super Cyclone Storm: Wind speed > 220 kmph (> 119 knots)

* Red colour warning does not mean "Red Alert", Red colour warning means "Take Action".

Forecast and Warning for any day is valid from 0830 hours IST of day till 0830 hours IST of next day.

For more details, kindly visit <https://mausam.imd.gov.in> or contact: 011-2434-4599

(Service to the Nation since 1875)

Hot and Humid: When maximum temperatures remain 3°C above normal along with the above normal relative humidity.